



ECONOMICS & MANAGEMENT BACHELOR'S DEGREE

**WESTERN GALILEE COLLEGE, AKKO, ISRAEL
ENGLISH-LANGUAGE PROGRAM**





PROGRAM OVERVIEW

- BA in Economics & Management - English-Language Program
- Duration: 3-year program
- Dual-major: Combines management foundations with expanded economics knowledge
- Language: Fully taught in English
- For full program details, visit:

https://wgalil.ac.il/ba/international_program_economics-and-management/

WHAT YOU'LL LEARN

- Core Competencies:
- Understanding market forces and government economic policies
- Business leadership and management principles
- Analytical problem-solving for business challenges
- Responding to economic threats and opportunities
- Financial, environmental, social, and political business factors
- International business perspectives
- Explore the curriculum:
- https://wgalil.ac.il/ba/international_program_economics-and-management/





EXCLUSIVE SCHOLARSHIP PACKAGE

Comprehensive Financial Support:

Focus on your studies while enjoying a unique cultural experience

Year	Tuition Coverage	Accommodation
1	100% covered*	Free dormitory
2	75% covered**	Free dormitory
3	50% covered***	Free dormitory

Full annual tuition (100%) is approximately \$3,200 USD

Year 1: Student pays \$0 (100% funded)

Year 2: Student pays approximately \$800 USD (25% of full tuition)

Year 3: Student pays approximately \$1,600 USD (50% of full tuition)



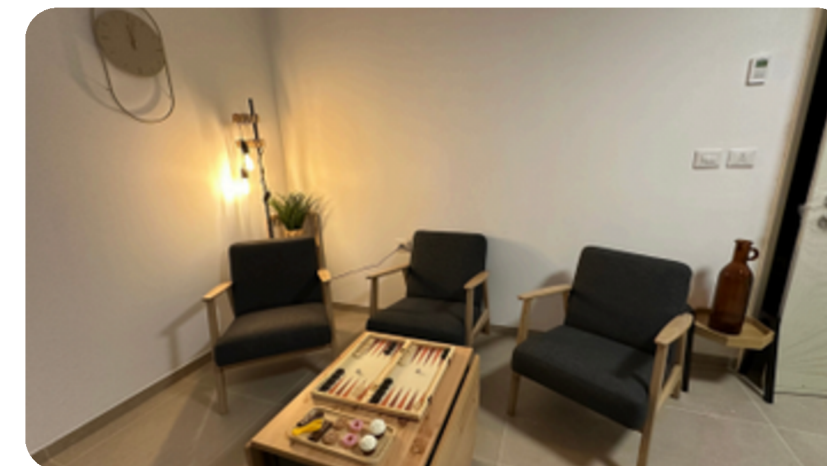
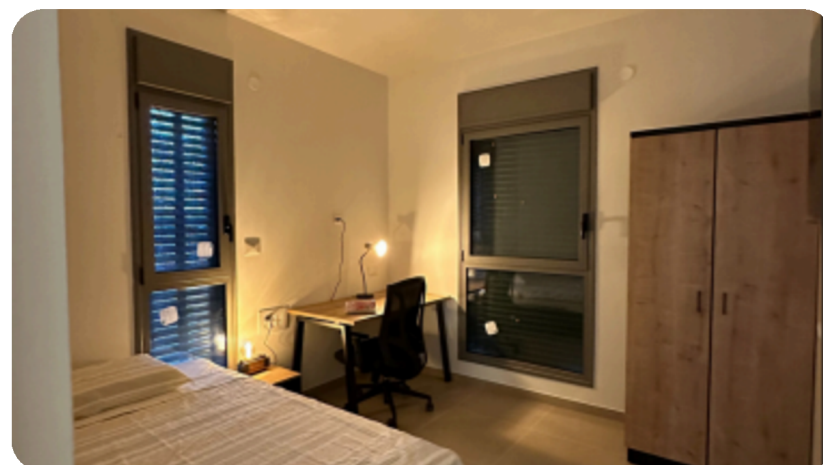
OUR STORY - WESTERN GALILEE COLLEGE

- Located in the historic city of Akko along the Mediterranean coast, Western Galilee College has developed since 1994 into a respected academic institution with 4,500 students from diverse cultural, religious, and ethnic backgrounds.
- Our 80-acre campus functions as an academic center where Jewish, Arab, Druze, Christian, and international students engage in rigorous study together, exchanging intellectual perspectives that enhance critical thinking and research. This diversity creates an enriched learning environment that prepares students for global professional settings while promoting academic collaboration across cultural boundaries.
- As a key educational institution for Northern Israel, we deliver high-quality academic programs while fostering intercultural competence. Our commitment extends to producing graduates with both the professional knowledge and multicultural understanding required for success in today's interconnected global economy.



STUDENT VILLAGE

- Student Village provides housing for the full duration of your academic studies, serving as your "second home" while at university.
- The building offers everything students need:
- Study rooms for quiet academic work
- Recreational spaces for relaxation and socializing
- A large balcony for fresh air and gatherings
- Commercial facilities on the ground floor for convenience
- Housing options are flexible with 16 different layouts available:
- Single rooms for privacy
- Double, triple, and quadruple units for those who prefer shared living
- Accessible units for students with disabilities
- Every aspect of Student Village has been designed specifically to support both your academic success and social wellbeing during your university years.



A CAMPUS DESIGNED FOR ACADEMIC EXCELLENCE

Optimized Learning Environment

Western Galilee College campus provides a comprehensive academic infrastructure supporting your educational journey.

Advanced Classroom Technology

All classrooms are equipped with interactive smartboards, advanced audiovisual systems, and high-speed internet to enhance your learning experience

Computing Resources

Multiple computer labs are strategically located across campus, providing access to specialized software and research tools essential for your studies.

Innovation Center

Our Innovation Center bridges theory and practice, giving you opportunities to apply classroom concepts in real-world scenarios.

Research Library

The academic library offers extensive scholarly resources and collaborative spaces to support various research methodologies and group work.

Management School Facilities

The Sir Harry Solomon School of Management features technologically-enhanced spaces designed for advanced learning and global academic engagement.



RESEARCH CENTERS

arch centers, including:

ce
ies

o the advancement of knowledge in their respective fields while
to participate in meaningful research initiatives under faculty

ch-centers/



INTERNATIONAL ACADEMIC EXCELLENCE

Western Galilee College maintains a robust International Department that actively cultivates academic partnerships with prestigious institutions worldwide, including:

- **European Union countries**
- **United States**
- **North Africa (Morocco)**
- **Balkan region (Albania, Kosovo)**
- **Additional international partners**
- **These diverse collaborations enable us to:**
 - **Offer international exchange opportunities for students and faculty**
 - **Develop joint research initiatives with global academic partners**
 - **Host visiting professors from prominent universities worldwide**
 - **Provide access to international academic conferences and workshops**
 - **Implement educational methodologies that meet global standards**
 - **Expose students to diverse cultural and business practices**

Our faculty combines academic credentials with practical expertise, providing instruction that is both theoretically sound and applicable to real-world contexts. The college's commitment to English-language instruction prepares students to excel in the global marketplace upon graduation.

A TRADITION OF ACADEMIC EXCELLENCE

Where Knowledge Meets Opportunity

Beyond the Classroom Our faculty combines research expertise with passionate teaching, guiding students through intellectual discovery and innovation.

Global Perspective International conferences and partnerships bring diverse perspectives to campus, connecting students with worldwide academic networks.

Inclusive Learning English-language courses across disciplines create opportunities for students from various backgrounds to succeed.

Future-Ready Education Academic rigor blends with real-world application, preparing graduates for both current careers and tomorrow's challenges.



COMMUNITY ENGAGEMENT

Beyond Academics:

- **Social programs through Dean of Students office**
- **Volunteer initiatives in the Galilee region**
- **Social entrepreneurship projects**
- **Leadership development activities**



Community & Social Engagement

Educational Outreach

- **Formal Education: Partnerships with local schools**
- **Informal Education: Tennis center, equality scholarships, community centers**
- **Holiday Programs: Summer camps and vacation activities for youth**

Cultural Celebrations

- **Multi-faith holiday celebrations (Jewish, Muslim, Christian, Druze, Ethiopian)**
- **"Our Star" student singing competition**
- **Student art exhibitions: individual showcases, peace exhibition, women's perspectives**

Sports & Recreation

- **Campus fitness center for students and staff**
- **College football team and community tournaments**
- **Friendship matches with special communities (e.g., "Brothers for Life" veterans)**
- **Running groups, fitness days, pilates classes, chess competitions, kickboxing**



Community & Social Engagement

Community Service

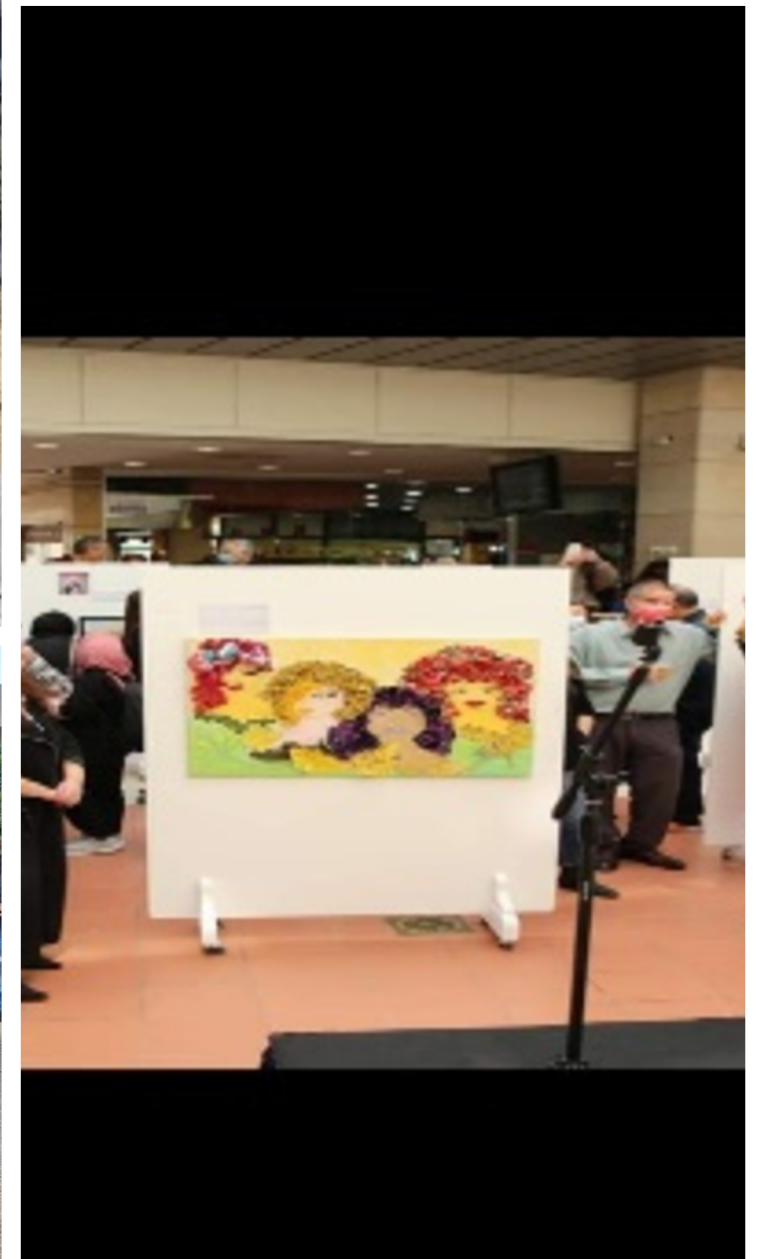
- Senior citizen support: nursing homes and day centers
- Programs for people with disabilities
- Mentorship program for students with disabilities on campus

Personal Development

- Enrichment lectures
- Personal development workshops
- Student empowerment programs



GALLERY





DIVERSE STUDENT COMMUNITY

Inclusive Environment:

- **Students from all communities across the Galilee**
- **Supportive faculty dedicated to student success**
- **Personal attention and mentoring**
- **Collaborative learning environment**
- **Global perspective with local connections**



WHY CHOOSE US?

Unique Value Proposition

- High-quality English-language education
- Generous scholarship package
- Diverse cultural experience
- Beautiful Mediterranean location
- Supportive academic environment
- Practical skills for global careers
- Strong community connections

TAKE YOUR NEXT STEP WITH WESTERN GALILEE COLLEGE

We invite you to learn more about our English-language BA program in Economics and Management:

International Office: +97249015118

Email: carmitg@wgalil.ac.il

International Department: [add phone number]

Social Media: XXXX

Application Deadlines:

Fall Semester: November 23rd, 2025

Spring Semester: XXXX

Join us for a high-quality academic experience in a diverse, multicultural environment with exceptional financial support



<https://english.wgalil.ac.il/international/>